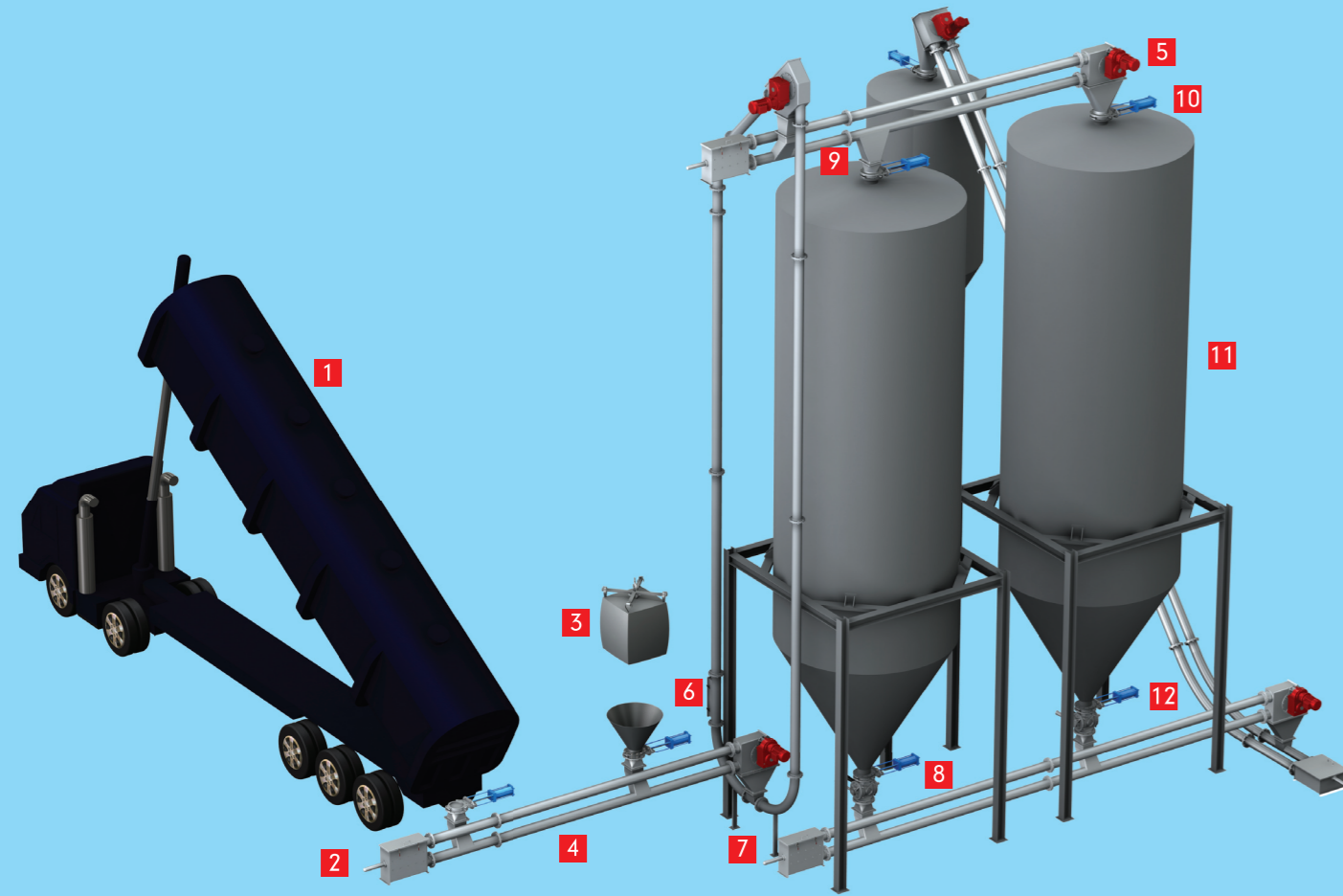


## ILLUSTRATION OF THE CONVEYING SYSTEM



### STRUCTURES

- |                                   |                       |
|-----------------------------------|-----------------------|
| 1 Loading Truck                   | 7 Vertical Bend       |
| 2 Tensioner Box                   | 8 Dosing Rotary Valve |
| 3 Big Bag                         | 9 Outlet Hopper       |
| 4 Pipe                            | 10 Knife Gate Valve   |
| 5 Driving Wheel Box               | 11 Silo               |
| 6 Maintenance / Inspection Window | 12 Horizontal Bend    |



## PIPE CHAIN DISC CONVEYING SYSTEMS



**Taiwan Control Valve Corporation**  
No. 16, Min-Long Rd. Yang-Mei, Taoyuan  
County Taiwan 326  
T + 886 3 472 6000 F + 886 3 472 6677  
taicon@tcvct.com www.tcvct.com



# P

## ipe Chain Conveying System Program

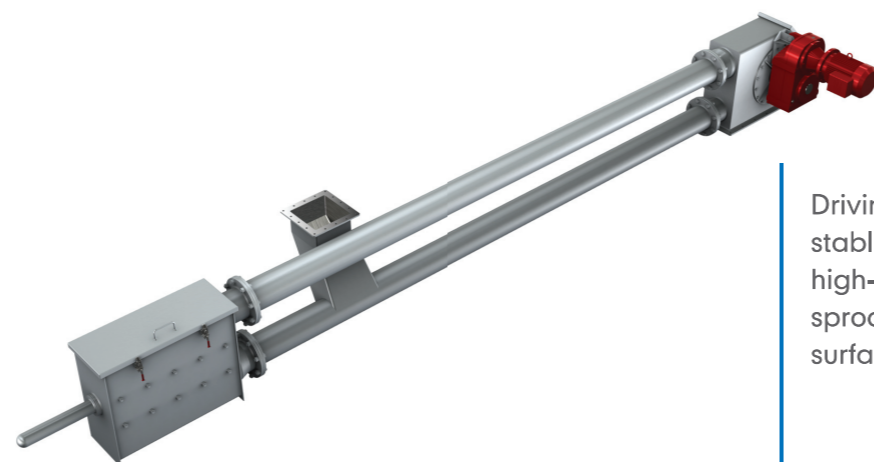
### ORIGIN

After decades of research on powder and pellet conveying system and practical experiences, our directions of goals are developing easy installation, low energy consumption, and low maintenance cost. Therefore currently Pipe Chain Conveying Equipment is the excellent solution. It performs outstanding on energy consumption, operation and maintenance, especially in plants operating with PTA raw materials. Pipe Chain Conveying Equipments is also environmental friendly.

### FEATURES

- High-efficient structure settings** ---- low energy consumption
- Modularity design**--- increased efficiency of materials, easy assembly, complete functions
- Low operating cost**--- Simple and intelligible control mode, low training cost
- Multiple-Protection**--- Reduce system failure rate
- Low Abrasion** --- Low abrasion on the structure and material, low maintenance cost
- Easy system problem solving**--- simple structure, clear principle, easy system problem solving, no professional skills required
- Easy Installation**--- standard system installation.

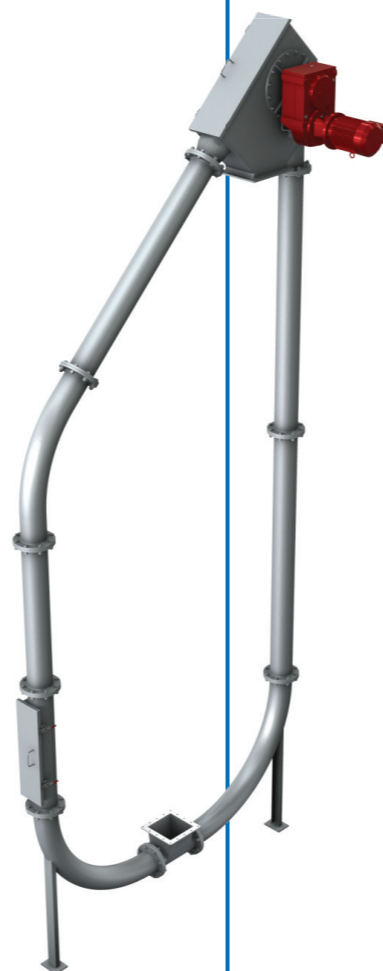
### MAIN PARTS



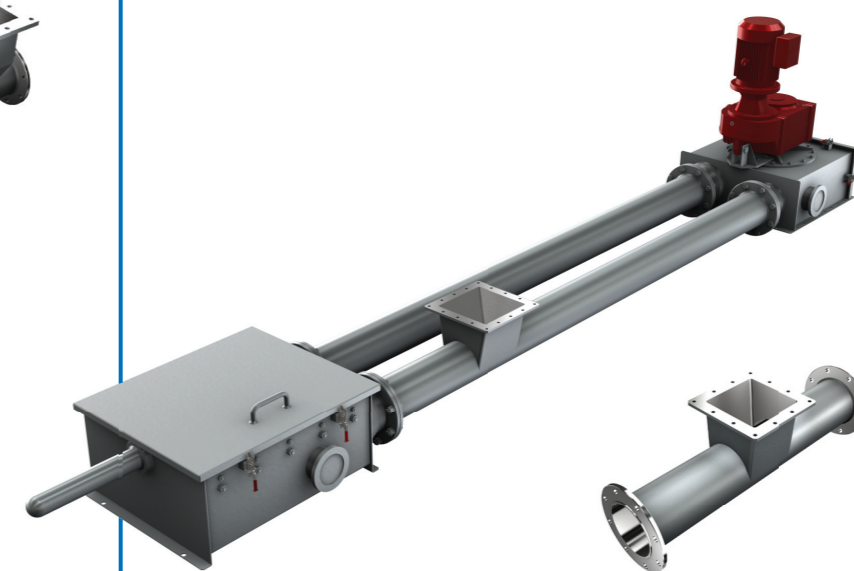
Driving Wheel Box / Tensioner Box: Smooth and stable running, low abrasion wear, high-efficiency. High strength structural and sprocket; low residual interior design; internal surface polishing treatment.



Motor Reducer: Combine with internationally known brands, high efficiency, low failure rate, and easy to obtain.



Pipe / Chain / Disc: smooth running, low resistance, low abrasion wear. Male-female flange connection with smooth continuation; internal surface polishing treatment; high strength coefficient and homogenization treatment chain; simple assemble disc with smooth surface.



Input / Output Hopper: Smooth discharging with no residual on the blind angle; internal surface polishing treatment.

Maintenance / Inspection Window: quick open design / reliable, smooth interior with no residuals on the blind angle; internal surface polishing treatment.

### MATERIALS

Driving Wheel Box / Tensioner Box / Pipe / Chain:  
 DIN 1.4301 ASTM A167-304 JIS SUS304 ;  
 DIN 1.4401 ASTM A167-316 JIS SUS316 ;  
 DIN 1.4404 ASTM A167-316L JIS SUS316L ;  
 DIN 1.4541 ASTM A167-321 JIS SUS321

### DISC

Wear-resistant PE, PU

### MODEL

PCD150 (for 6" pipe)

Q(m <sup>3</sup> /h)	2.00	3.00	4.00	6.00	9.00	12.00	15.00	20.00	23.00	26.00
P(KW)	0.55	1.10	1.50	2.20	3.75	3.75	5.50	5.50	7.50	7.50
V(m/s)	0.03	0.05	0.07	0.11	0.16	0.22	0.27	0.35	0.40	0.46
n(1/min)	1.56	2.26	2.97	4.67	6.72	8.98	11.25	14.93	17.12	19.38

PCD200 (for 8" pipe)

Q(m <sup>3</sup> /h)	20.00	24.00	31.00	36.00	41.00
P(KW)	3.75	5.50	5.50	7.50	7.50
V(m/s)	0.22	0.27	0.35	0.40	0.46
n(1/min)	8.98	11.25	14.93	17.12	19.38

PCD250 (for 10" pipe)

Q(m <sup>3</sup> /h)	32.00	38.00	46.00	62.00
P(KW)	5.50	5.50	7.50	11.00
V(m/s)	0.21	0.25	0.30	0.40
n(1/min)	8.91	10.54	12.80	17.19

